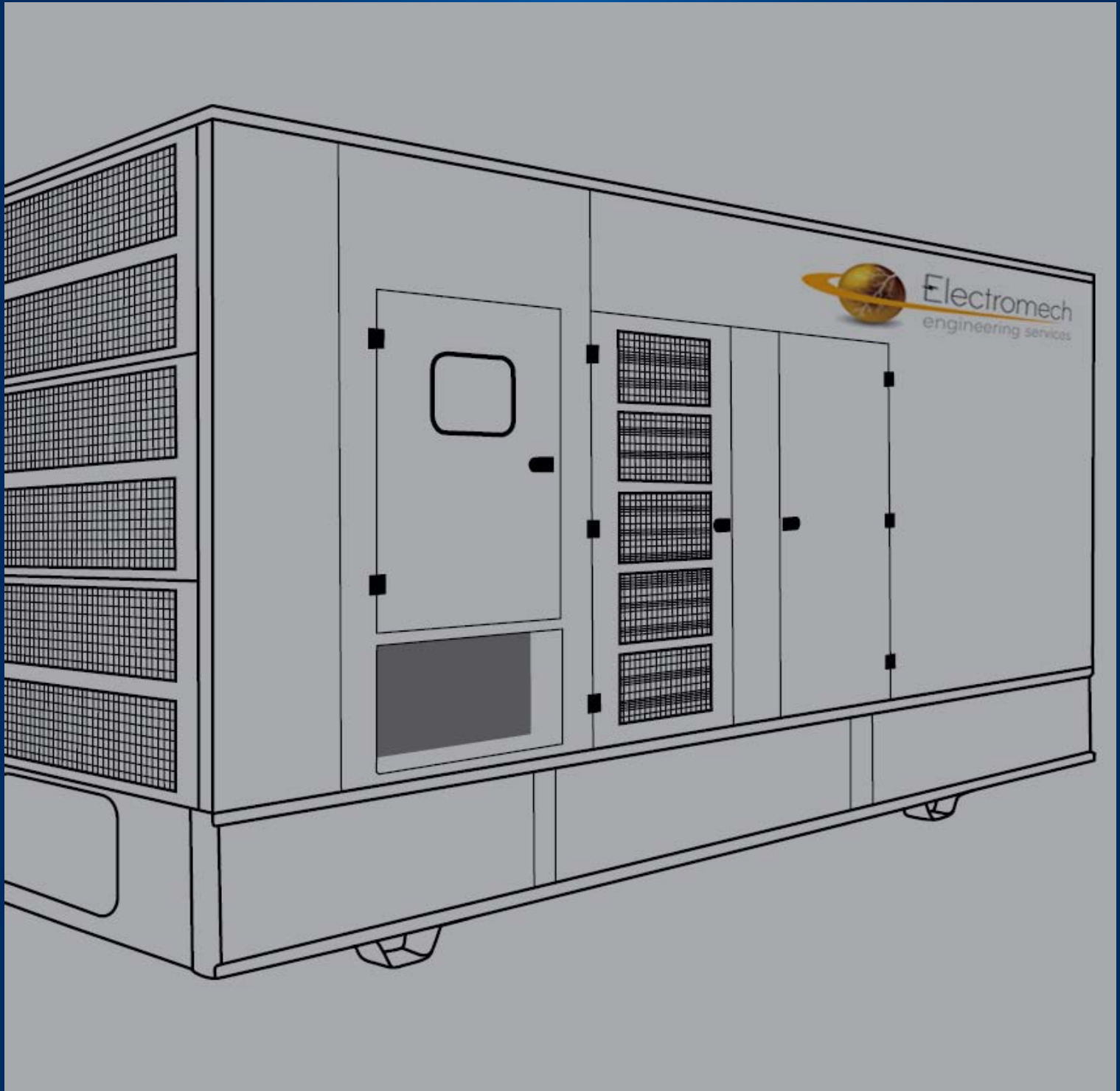


www.aggretech.co



Type

AGS0520D

DIESEL GENERATOR SET

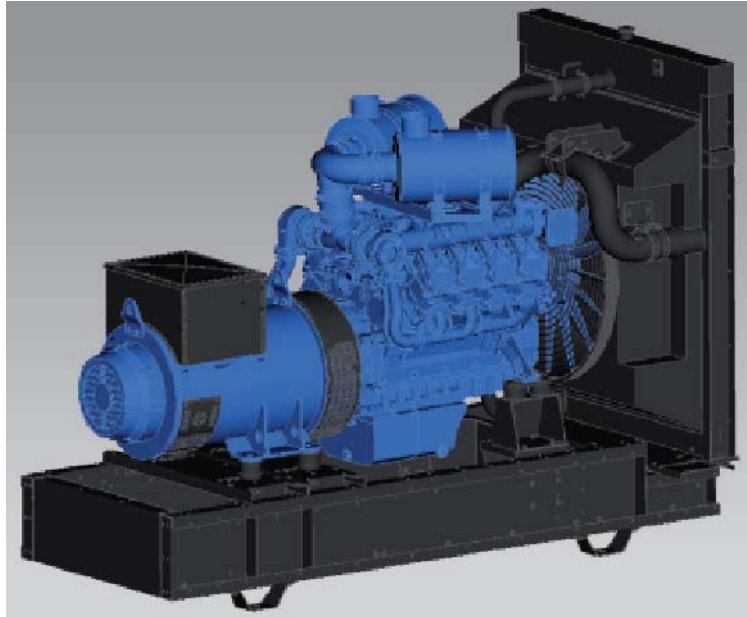
500/550 kVA

Machine Set

# Diesel Generating Set

## Type AGS0520D

### 500/550 kVA



Torsion-free base frame made of laser-cut, welded tilted steel profiles; machine group is mounted on base frame with rubber feet which allow the machine group to vibrate; however, there is no transfer of vibration to frame; eyelets for crane hooks included in base frame; engine and alternator are connected with steel flange coupling;

#### Genset Data

Variable continuous power (CRP)	500 kVA
Emergency power (ERP)	550 kVA
Power factor (cos phi)	0.8
Nominal voltage	400 V / 230 V
Nominal current	722 A
Frequency	50 Hz
Speed	1 500 min
Load acceptance	55 %

#### Fuel System<sup>4</sup>

Fuel consumption at	
100 % load	117.5 l/h
75 % load	84.5 l/h
50 % load	55.8 l/h
25 % load	30.0 l/h
Specific fuel consumption at	
100 % load	219 g/kWh
75 % load	210 g/kWh
50 % load	208 g/kWh
25 % load	224 g/kWh
Fuel tank capacity (Open Set)	400 l
Fuel tank capacity (Sound Proof)	1 100 l
Autonomy at full load (Open Set)	3.4 h
Autonomy at full load (Sound Proof)	9.4 h

#### Dimensions and Weights

Open Set	
Length	2 981 mm
Width	1 425 mm
Height	2 211 mm
Weight	3 500 kg
Sound Proof	
Length	4 580 mm
Width	1 680 mm
Height	2 530 mm
Weight	5 800 kg

#### Noise Emission<sup>5</sup>

Sound pressure $L_{PA}$ @ 1m (Open Set)	105 dB(A)
Sound pressure $L_{PA}$ @ 7m (Sound Proof)	approx. 70 dB(A)

## Engine Data

Manufacturer	Deutz
Type	BF8M 1015 CP
Configuration	4 cycle; V; 8 cylinder Diesel
Aspiration	turbo charged with charge air cooler
Displacement	15.9 l
Gross output - Prime power (PRP)	448.0 kW
Gross output - Emergency power (LTP)	490.0 kW
Compression ratio	16.5:1
Governor type	electronic
Governing standards	G3
Oil capacity (sump)	45 l
Oil consumption	0.3 % of fuel consumption
Starting voltage	12 V
Exhaust emission standard	TA Luft 2000

## Combustion Air

Combustion air volume	2 002 m <sup>3</sup> /h
Air cleaner type	dry; replaceable element with safety cartridge

## Exhaust System

Max. exhaust gas temperature	600 °C
Max. exhaust back pressure	50 mbar
Exhaust gas flow	6 012 m <sup>3</sup> /h

### Legend:

<sup>1</sup> PRP (Prime Power) is available at a variable load for unlimited hours. Adjustable permanent output 100 %, no time restrictions. Prime Power is in accordance with ISO 8528. A 10 % overload capacity is available for limited time in accordance with ISO 3046, AS 2789, DIN 6271 and BS 5514.

<sup>2</sup> LTP (Limited Time Power) is applicable for supplying power to a constant electrical load for limited hours in the event of a main power network failure. No overload is permitted. LTP is in accordance with ISO 8528.

<sup>3</sup> max. additional output in kVA (PRP).

<sup>4</sup> Fuel consumption according to Deutz datasheet as shown on www.deutz.com

<sup>5</sup> at 75 % load, according to EU directive 2000/14/EG the PRP and LTP power ratings

## Alternator Data

Manufacturer	Aggretech
Type	ACG0510-4-400
Mechanical protection (IP class)	IP 23
Insulation class	H
Excitation	brushless, self-exciting synchronous alternator
Voltage control	electronic, self-regulating +/- 1 %
Short circuit capability	3x nominal current
AC wavefactor total harmonic distortion	< 2 %
Radio interference	EN 55011 Class B, Group 1
Efficiency (cos phi 0,8 / 400V) at	
100 % load	94.1 %
75 % load	94.1 %
50 % load	93.3 %
Cooling air volume	3 288 m <sup>3</sup> /h

## Cooling System

Standard of cooling system	water cooled
Fan power consumption	14.1 kW
Cooling air flow	33 120 m <sup>3</sup> /h
Air pressure loss	1.5 mbar

## Powered by

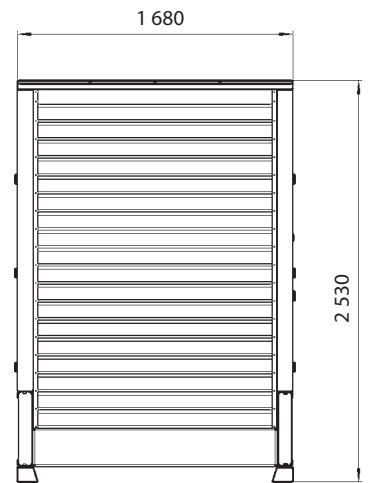
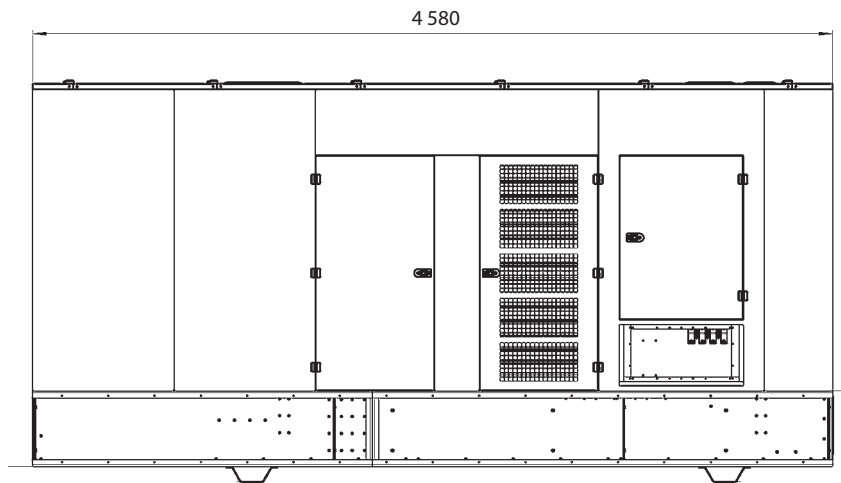
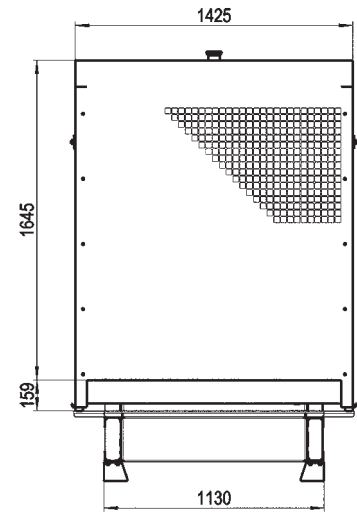
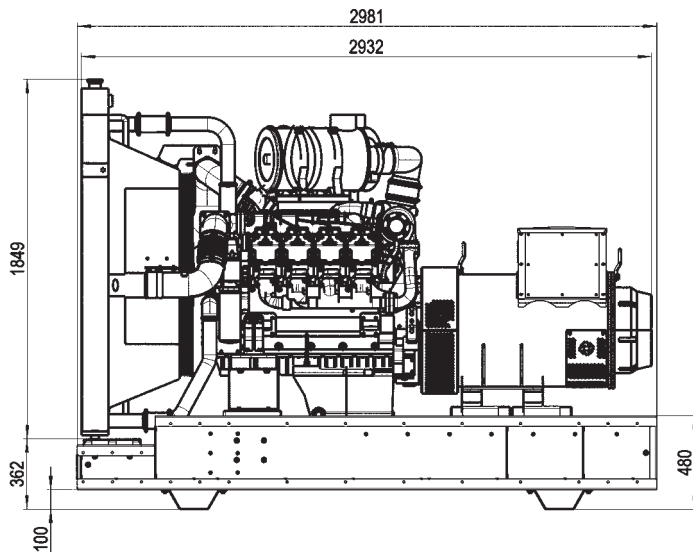


### Quality standards:

VDE 0530, DIN 6280, ISO 8528, IEC 34, BS 4999, BS 5000, BS 5514; We are certified specialist according to §19 I WHG.

All performance figures are to be understood for ambient conditions as follows: ambient temperature 25 °C, 100 m above sea level, rel. humidity 30 %. We reserve the right to change specifications without notice.

# Diesel Generating Set Type AGS0520D 500/550 kVA



Your authorised dealer

Drawings are not true to scale.

Weights refer to the dry weights and represent a set with standard features. Accessories and loose parts are not accounted. Drawings are for illustrative purposes only and might include special accessories.

We reserve the right to change specifications without notice.

A 2 / AGS0520D – 31/05/2010 – E

Electromech Engineering Ltd.  
Electromech House  
Unit 7 Otterswood Square  
Martland Mill Industrial Estate  
WIGAN  
Lancashire  
WN5 0LF

Telephone: 01942 226322  
Fax: 01942 226307  
email: [sales@electromech.org](mailto:sales@electromech.org)

